



THE RIGHT PARTS | AT THE RIGHT PLACE | AT THE RIGHT TIME

# EDAC

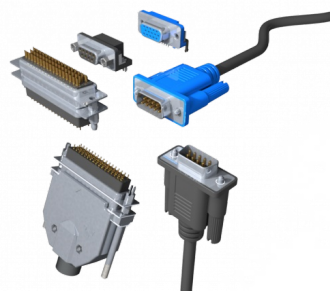
Connect With Us...  
Experience Makes The Difference

## D-SUB CONNECTORS

In the D-Mate family, EDAC offers an extensive range of industry standard D-Subminiature connectors. Available in standard density with 9, 15, 25, 37, and 50 contacts or high density versions with 15, 26, 44, 62 and 78 contacts. Vertical and right angle orientations, along with a variety of termination, plating and mounting options are available. They're also available in a stacked version.

### HIGHLIGHTS

- D-sub connectors in standard, video and high density formats
- From 9 to 50 pins (Standard), 15 to 78 pins (Hi-Density) or 29 pin (DVI)
- Wide variety of footprints in vertical or right angle through hole PCB styles
- Gold flash or gold plated contact surfaces, machined contact versions available
- Metal shells provide EMI and RFI shielding
- Plastic / metal or all metal versions available
- Dual port stacked right angle connectors available, with matched or mixed connectors
- Digital Video (DVI) and VESA / VGA styles available

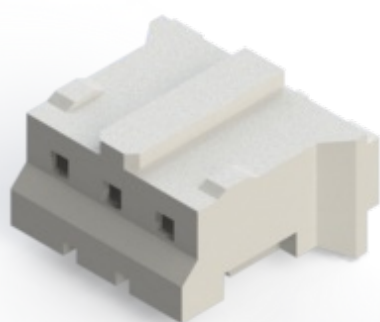


- Various industry standard footprints available in low or high density
- Plugs and receptacles in 9, 15, 25, 26, 44, 62 or 78 contact sizes
- Pin and socket contact mating design with P.C. tail termination
- Right angle and vertical orientations
- Metal shell provides EMI/RFI shielding, plug shell indents provide grounding and additional mating retention
- Board mounting features include threaded hole, two or four prong board locks for exceptional retention to P.C. board
- Flange mounting options for panel mount or connector mating include through hole, threaded holes and threaded standoffs with M3 or #4-40 UNC
- Metal or plastic body is available
- High temp options available



## 140 SERIES

The EDAC E-WTB wire to board connectors provide a reliable and economical connection. These shrouded headers are available in a variety of positions. Right angle, vertical, SMT or through hole mounted to the PCB, these connectors are ideal for use in wire harness applications and can be customized to meet your design parameters. Compatible with leading industry connectors as drop in replacements.



### FEATURES

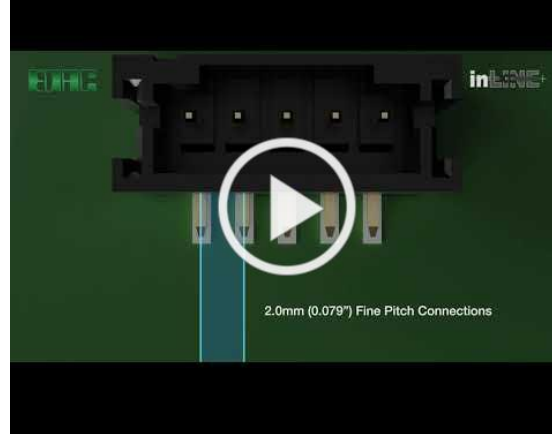
- 0.079" (2.00mm) contact spacing
- For use with P.C. board thickness: 0.047" (1.20mm) ~ 0.062" (1.60mm)
- Low profile insulator body, 0.185" (4.70mm) width 0.240" (6.10mm) height
- Contact termination options include: P.C. Tail, surface mount
- Top entry or side entry configurations
- Board retention contacts available
- Designed for high-density connection of internal wires to PCB

### SPECIFICATIONS

- Insulator Material: PA66, UL94V-0, Natural Color
- Contact Material: Brass (Male) and Phosphor Bronze (Female)
- Contact Plating: Tin plating (Male) and tin



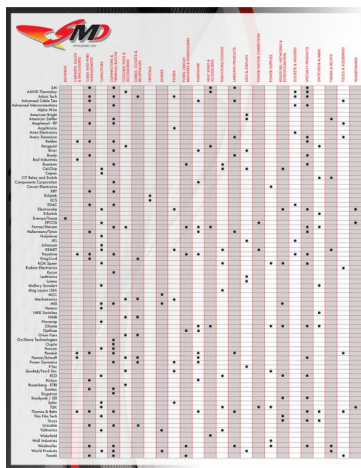
- plating with copper underplating (Female)
- Current Rating: 2 amps
- Voltage Rating: 100 V
- Contact Resistance: Initial - 10 milliohms maximum
- Dielectric Withstanding Voltage: 800 V AC rms
- Insulation Resistance: 1000 megaohms minimum
- Operating Temperature: -40°C to +105°C
- Applicable Wire: AWG #30~#24



### More About SMD Inc.

SMD Inc. is a Provider of Electronics and Electrical Components, Services And Logistic Solutions for Commercial, Industrial and Military Manufacturers. We offer a wide variety of products from an authorized supplier base. We provide technical and sales expertise on all product lines and commodities. SMD Inc. is a specialized distributor with a focused product offering. This has allowed us to be experts in our supplier's product offerings.

SMD Inc. offers supply-chain and logistics solutions to a variety of market segments including energy, medical, industrial controls, defense, automotive and transportation services.



### SMD Inc. Suppliers

SMD Inc. partners with quality suppliers. We focus on suppliers with like values, well-respected brands and manufacturers that our customers value. We represent a limited number of suppliers and can therefore focus our knowledge and effort in delivering the best solutions for our customers every time.

[View our Linecard](#)

### Contact us TODAY!

**Corporate Headquarters**  
ISO Certified Stocking Location - Irvine, CA  
949-470-7700 | [sales@smdinc.com](mailto:sales@smdinc.com)

**Los Angeles Regional Office**  
Torrance, CA  
310-379-3642 | [lasales@smdinc.com](mailto:lasales@smdinc.com)

**San Diego Regional Office**  
San Diego, CA  
619-851-9209 | [sdsales@smdinc.com](mailto:sdsales@smdinc.com)

**Northeast Regional Office**  
ISO Certified Stocking Location - Exeter, NH  
603-681-0320 | [saleseast@smdinc.com](mailto:saleseast@smdinc.com)

**Midwest Regional Office**  
Chicago, IL  
847-293-1881 | [mwsales@smdinc.com](mailto:mwsales@smdinc.com)

**Southwest Regional Office**  
ISO Certified Stocking Location - El Paso, TX  
949-470-7700 | [sales@smdinc.com](mailto:sales@smdinc.com)

**Florida Regional Office**  
Deerfield Beach, FL  
954-428-8840 | [florida@smdinc.com](mailto:florida@smdinc.com)

**Northwest Regional Office**  
Sunnyvale, CA 94086  
408-988-3751 | [sunnyvale@smdinc.com](mailto:sunnyvale@smdinc.com)

**Arizona Regional Office**  
ISO Certified Stocking Location - Mesa, AZ 85210  
602.275.2626 | [azsales@smdinc.com](mailto:azsales@smdinc.com)

**Mexico Sales**  
Tijuana, Mexico  
011 52 664 370 8753 | [preguntas@smdinc.com](mailto:preguntas@smdinc.com)

